

Mekong Research Symposium
16 December 2019, Hanoi, Vietnam



MRC Socio-Economic Data Collection and Analysis

A Summary

Ms. Nguyen Thi Ngoc Minh, Socio-Economic Specialist, MRC Secretariat



I. SIMVA – Social Impact Monitoring and Vulnerability Assessment

What are the main elements?

LIVELIHOODS

- Dependence on Fish
- Dependence on Other Aquatic Animals (OAAs)
- Dependence on irrigation and riverbank cultivation



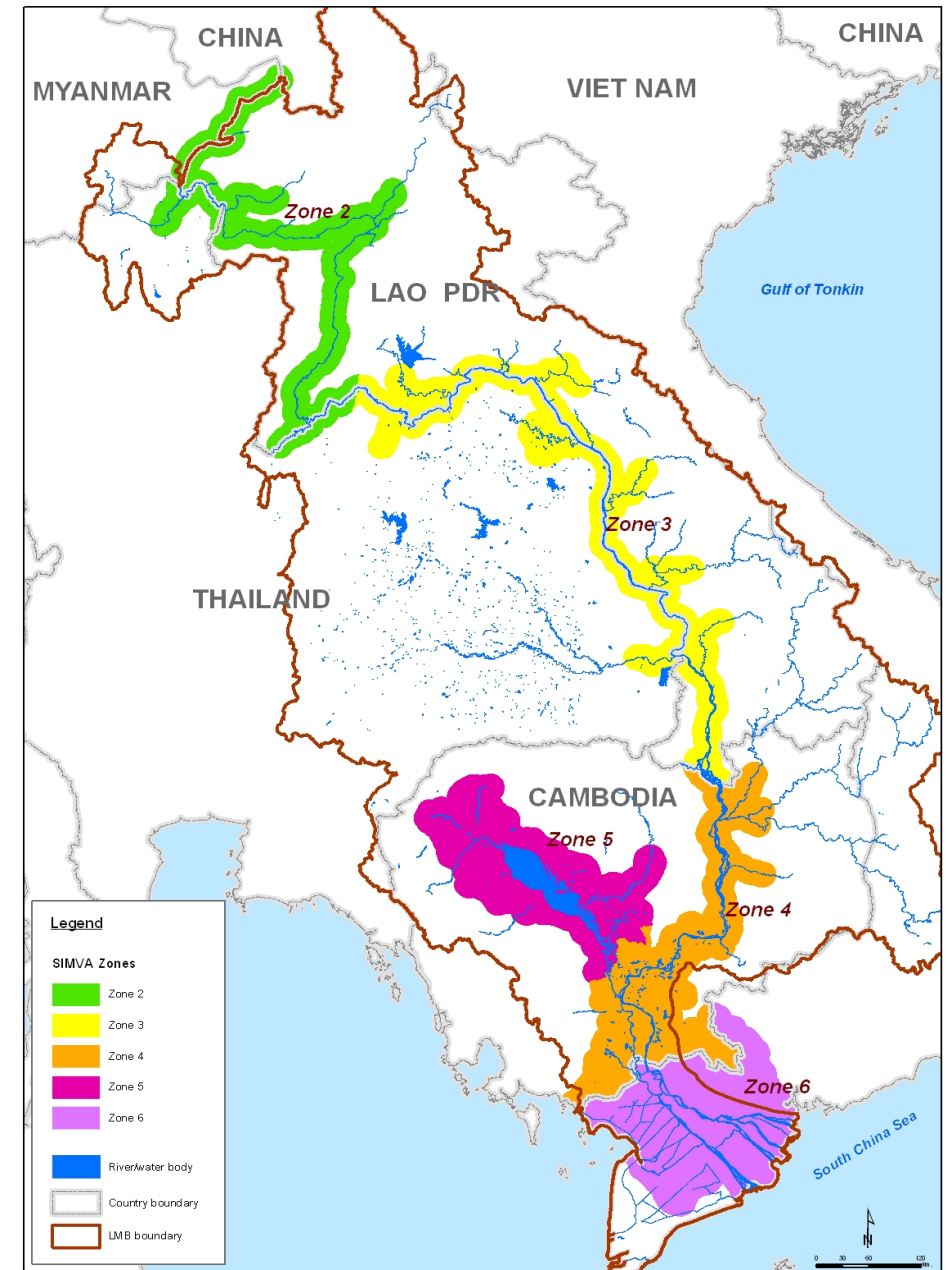
VULNERABILITY

- Resilience
- Climate change related social vulnerabilities



I. SIMVA – Geographical coverage

- ❖ GIS to establish corridor along the Mekong mainstream:
 - ✓ All those areas inundated by peak flood of 2002
 - ✓ Major wetlands (Songkhram & Tonle Sap)
 - ✓ Major tributaries for a distance of 40 km upstream of confluence
 - ✓ 15 km corridor



I. SIMVA methodology

Five to ten year trends

Qualitative
Participatory Study
producing village event
timelines for the past
five years

Present and past 3 years and 12 months -
village level

Village Profiles - socio-
economic conditions
and water resource
utilization and flooding
at present and over the
past 3 years and the
last 12 months

Present and past 3 years
and 12 months -
households

Household Survey -
socio-economic
conditions and water
resource utilization and
flooding situation over
the past 3 years and
the last 12 months



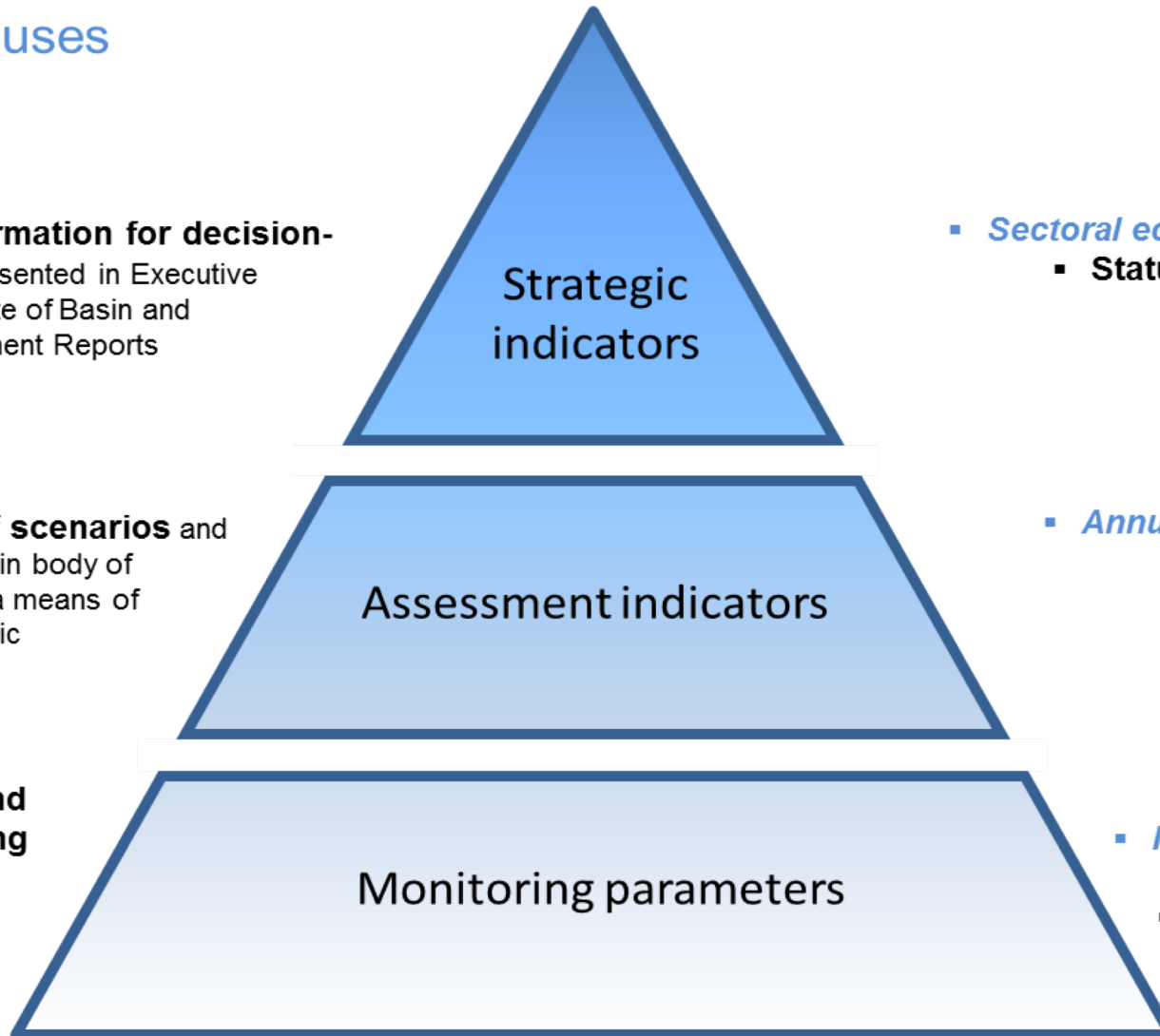
II. MRC Indicator Framework

Illustrative uses

High-level information for decision-takers, eg as presented in Executive Summaries of State of Basin and Scenario Assessment Reports

Comparison of scenarios and sections in the main body of the SoB, both as a means of generating strategic indicators

Field survey and other monitoring data periodically collected and maintained in the MRC information system



Examples

- *Sectoral economic performance*
 - **Status of river-dependant livelihoods**

- *Annual sectoral economic output and exports*
 - **Employment and incomes in fisheries**

- *Installed capacity and irrigated area*
 - **Per capita incomes**
obtained from census and SIMVA records

Total	Socio-Eco
15	5
53	24
185	61

III. MRC SOCIO-ECONOMIC DATABASE



Mekong River Commission

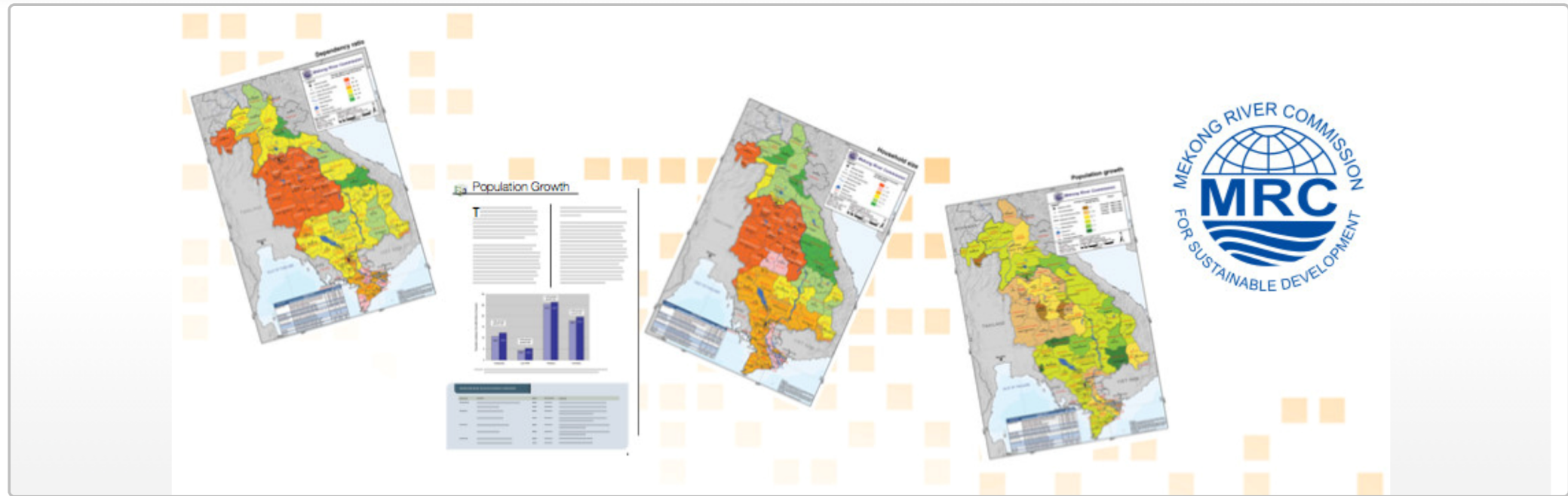
MRC Socio-Economic Database

[aLogin](#)

[Data Inventory](#)

[User Manual](#)

[Support](#)



Thank you

