



# MODFLOW: Connecting Groundwater to Understand Livelihood the Mekong Region

**SACHIN SHAH**

Hydrologist

U.S. Geological Survey

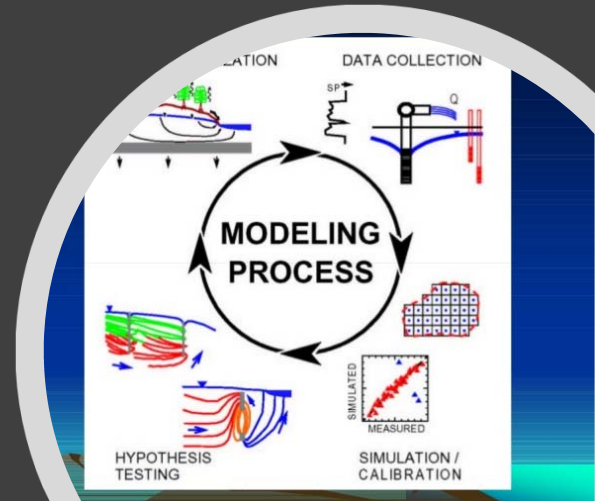
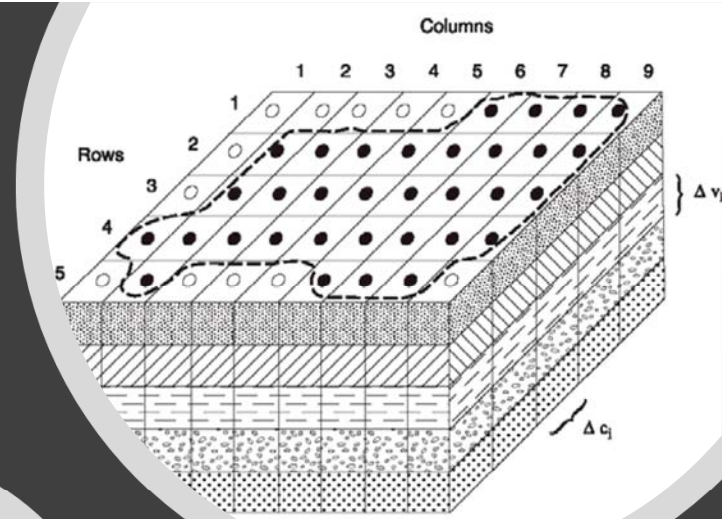
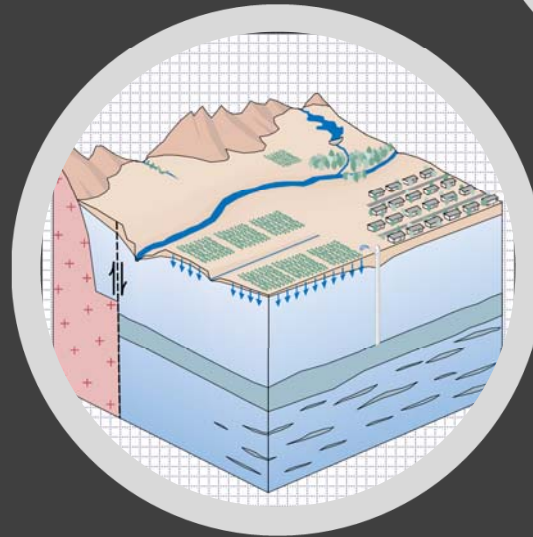
Geospatial Science + Cyber Innovation Branch

*[webapps.usgs.gov](http://webapps.usgs.gov)*

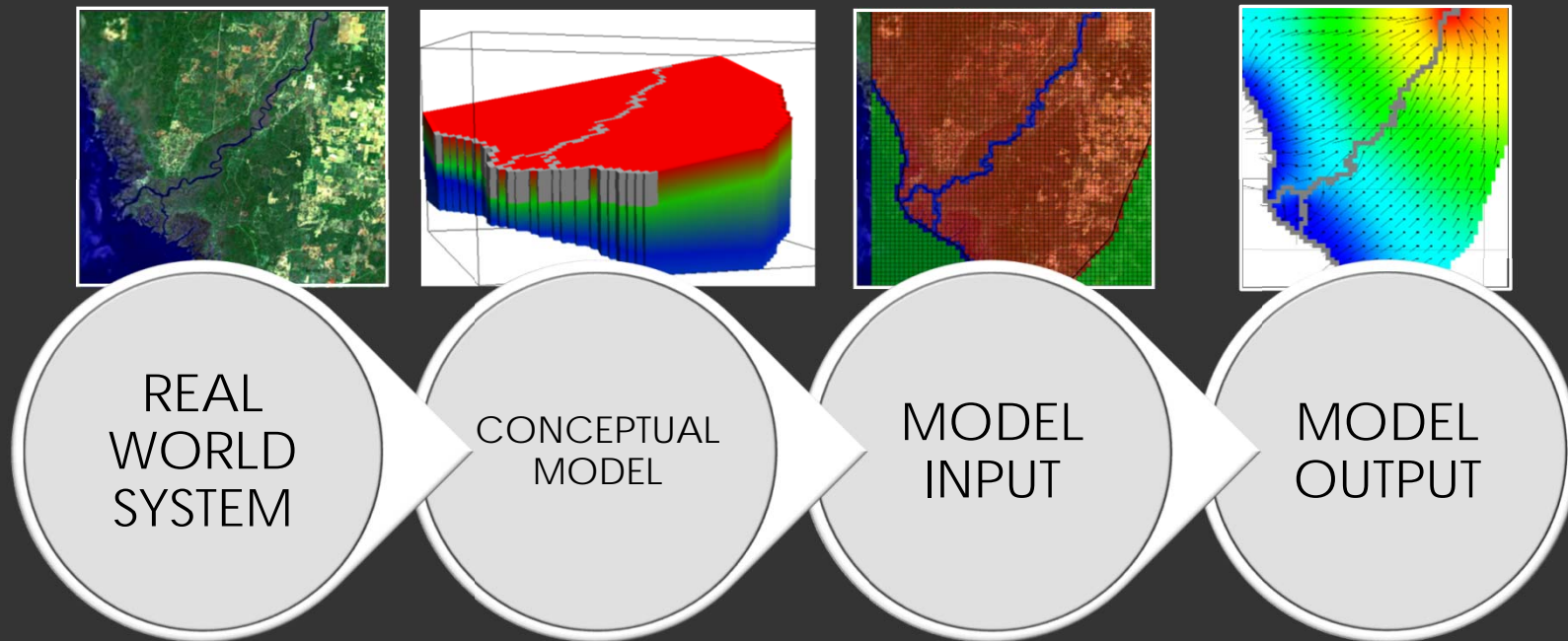


# MODFLOW

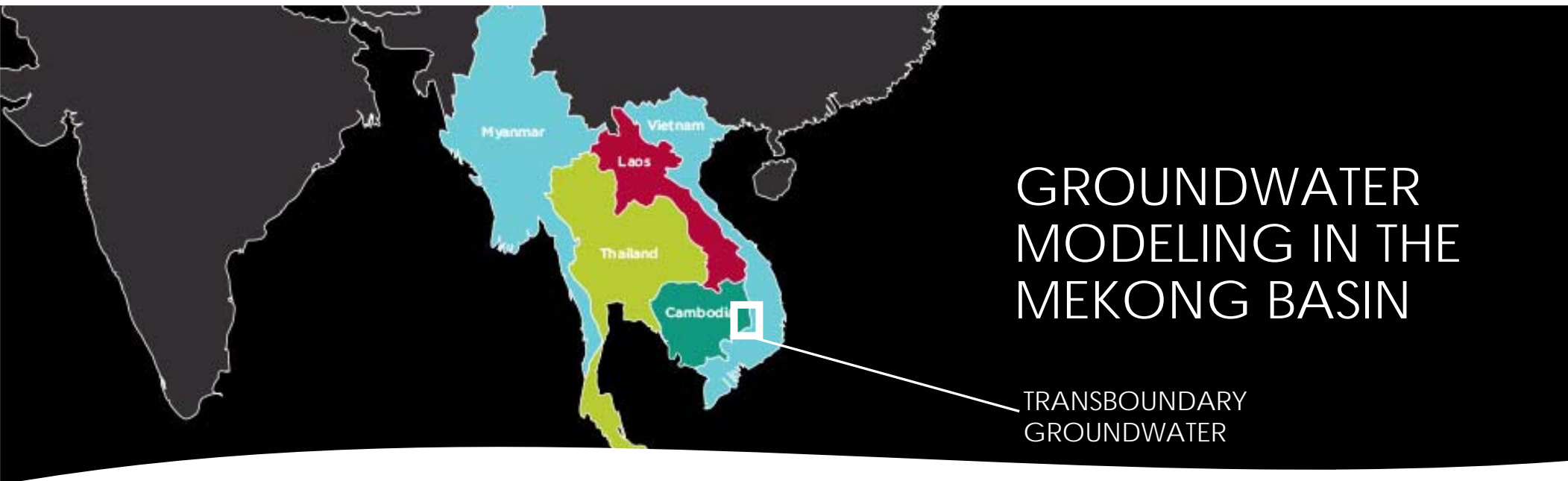
- Simulating aquifers in 3D
- Quantitative conceptual model
- Long-term planning scenario tool
- **OPEN SOURCE** and code is available to the public



# MODEL DEVELOPMENT APPROACH



- What will model be used for?
- What processes are important?



## GROUNDWATER- SURFACE WATER INTERACTION

- Distributed, geographical and jurisdictional barriers
- Diverse levels of capacity and resources
- Differing/competing interests
- Varying policies and institutional arrangements

# GROUNDWATER MODEL ANALYSES



WELLHEAD PROTECTION  
AREAS

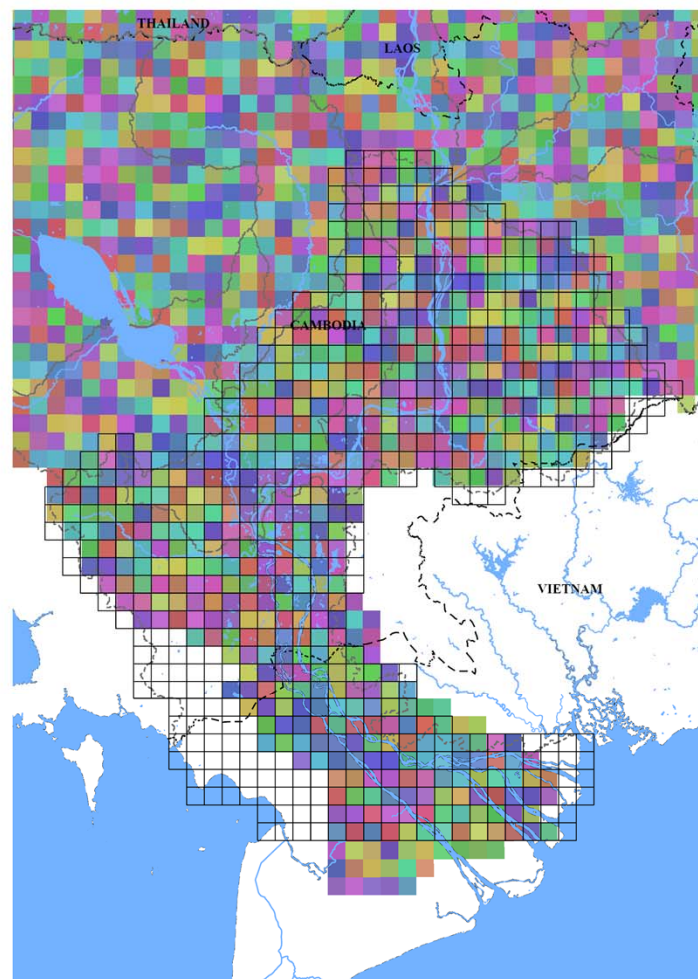
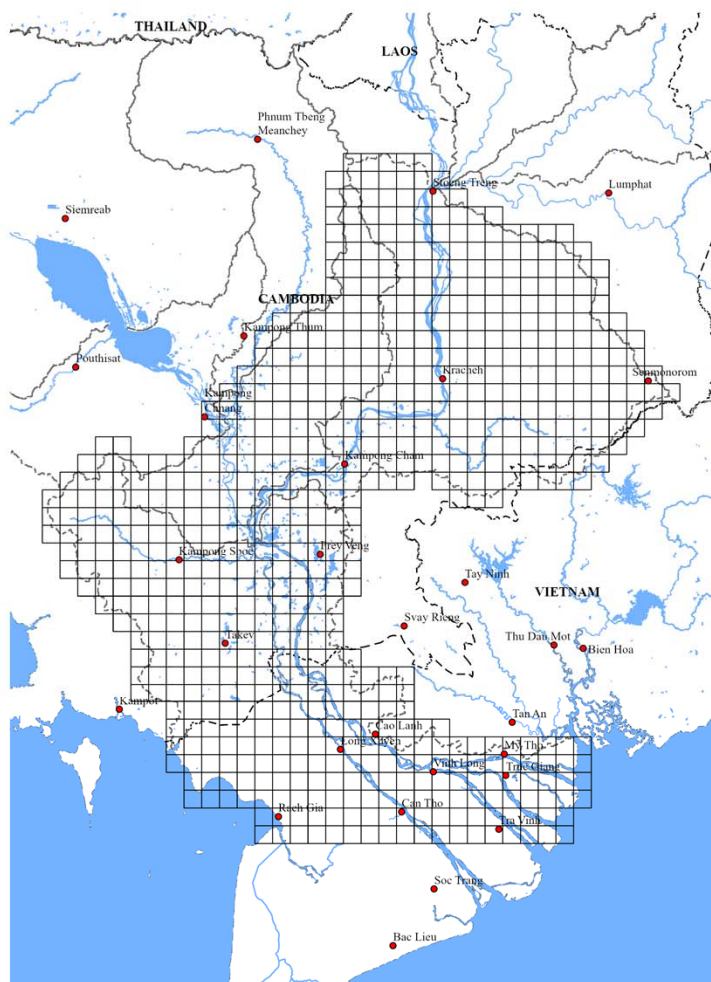


SALT-WATER INTRUSION



LAND SUBSIDENCE





RID